



# Geospatial Extensions for ESRI®

Link facility and infrastructure data with the intuitive power of geospatial technology to make informed decisions

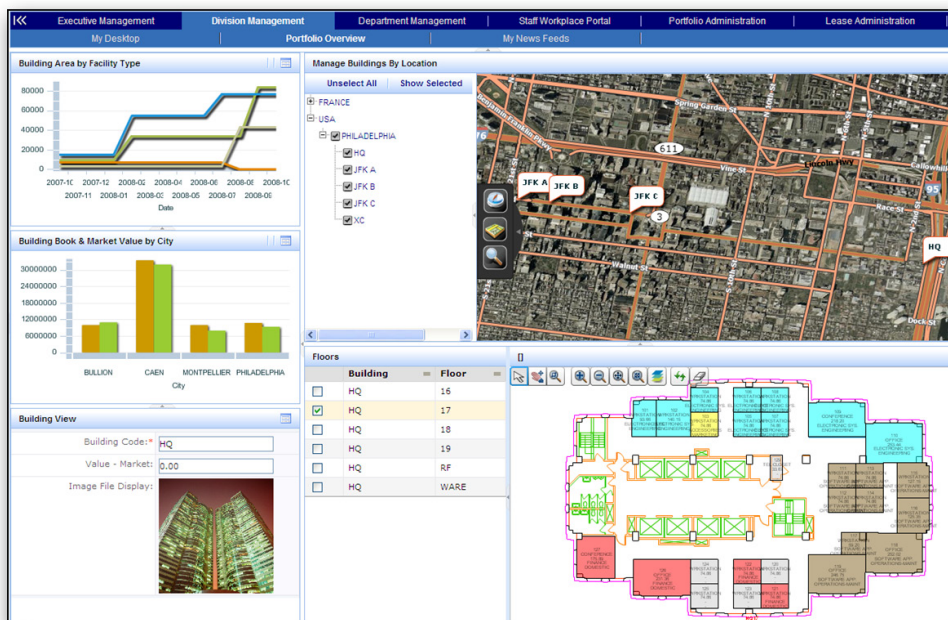
Many leading organizations recognize Geospatial Information Systems (GIS) as an essential information tool to address extended markets, aging infrastructure, shifting demographics, and compressed cycle times. The knowledge gained from GIS allows organizations to make better decisions, saving time and resources. You can now use powerful geospatial capabilities to illuminate your existing real estate, facility and infrastructure information through the ARCHIBUS Geospatial Extensions for ESRI. This integration will provide you an even more powerful multi-layered perspective of critical organizational initiatives.

## Use Cases include:

- Lease & Property Administration
- Occupancy Planning/Vacancy Analysis
- KPIs, Benchmarking Analysis
- Facilities & Site Infrastructure Master Planning
- Site and Proximity Analysis
- Employee/Customer/Competitor Mapping
- Risk Assessment & Business Continuity Planning
- Emergency Preparedness & Response Analysis
- E911, Executive Order 13327, BRAC Mandates
- Environmental Compliance, EHS
- Work Order Management
- Utilities, Cable Plant & Network Management
- Asset Tracking & Management
- **Plus Many More...**

## Benefits

- **Improves organizational collaboration and decision-making by providing geospatial business intelligence for sites, space, infrastructure, and physical assets**
- **Combines real estate, facility, and infrastructure with geospatial information to provide visual representations that improve analysis for competitive advantage**
- **Allows both interior and exterior data to be queried simultaneously to visualize an organization's assets and streamline enterprise workflow processes, enabling business transformation**
- **Leverages ESRI's pre-eminent expertise in aggregating mapping and geospatial information quickly and at low cost**



*Incorporate a geospatial perspective directly within your ARCHIBUS Web Central dashboards to unlock the power of geospatial visualization for improved analysis, reporting, and decision-making*



### Bringing Geography to Your Business Intelligence

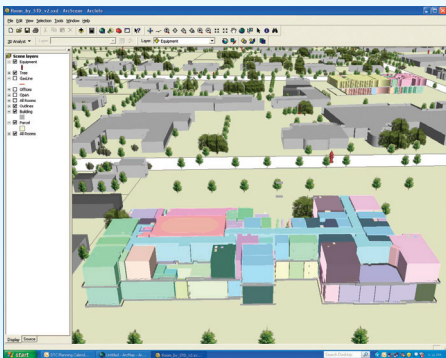
Unlock the spatial component of your valuable business data and see your enterprise from a new perspective. You can now view a common operating picture of sites, space, infrastructure, and physical assets to increase organizational collaboration and make well-informed decisions concerning campus-scale space planning and real estate portfolio management.

- Increase communication and collaboration through immediate access and complete integration of spatial and non-spatial data
- Flow architectural CAD and Building Information Modeling (BIM) directly into GIS
- Maintain a single, seamless data repository for critical information on assets and processes—both inside and outside of your buildings
- Merge GIS and enterprise workflows to speed mission-essential processes and deliver organizational results

### Linked Visual Representations for Improved Analysis

Boost your competitive advantage with top-notch analytic tools to help answer both strategic and tactical questions that the C-level suite would ask. High performance organizations require a deep level of spatial knowledge to locate potential customers, assess risks, streamline procedures, and optimize operations.

- Extend the power of your ERP and Enterprise Information Modeling (EIM) with ARCHIBUS Geospatial Extensions
- View maps, and demographics side-by-side with the financials that measure and the workflows that drive processes such as capital projects, property transactions, and lease renewals
- Locate heat-maps of occupancy, lease expirations, total costs per square foot, costs of deferred maintenance, and other key performance indicators



Use thematic “heat” maps within an integrated, three-dimensional operational picture to visualize your vacancies, lease expirations, department occupancy, and more

### Analyze Interior and Exterior Data Simultaneously

The ARCHIBUS Geospatial Extensions let you use the powerful family of ESRI solutions to address issues that cross the artificial boundary between “inside” and “outside” the building. The extensions provide “real world” context and enable quicker decision-making based on rich, multi-dimensional sources of information.

#### For example,

- Real Estate Managers may ask: Which cities provide the optimal mix of demographic variables for opening a new office, manufacturing plant, or retail location?
- Space Planners may ask: How do functional departments span buildings in a campus setting?
- Operations Staff may ask: How do utility lines relate to and impact interior spaces?
- Security Personnel may ask: Which mission-critical rooms and equipment are in close proximity to our natural gas lines?

### Robust GIS Functionality Made Affordable

Even if your organization or department does not have an existing GIS capability, you can instantly geo-enable your deployment by linking ESRI® ArcGIS Services, directly into ARCHIBUS Web Central. You can use the off-the-shelf forms for working with properties, leases, or work requests; or you can embed your own GIS queries using just standard ARCHIBUS integration skills.

- **Outsource your GIS practice:** you can easily correlate the wealth of existing data provided by ESRI, such as street maps, satellite data, demographics, and more to your own portfolio of properties, leases, buildings, and assets
- **Avoid redundant data entry:** you can automatically geo-reference all of your properties, buildings, leases, and assets using the information you already have in your ARCHIBUS database
- **Keep in synch:** all GIS queries are connected to live dynamic data provided by ESRI, as you perform property transactions, sign and expire leases, reassign spaces, complete work orders and more

