

Facilities and Infrastructure Management Solutions from ARCHIBUS and Autodesk


Visualize your Facilities

Strategize your Future

Highlight All Vacant Rooms
Page 1

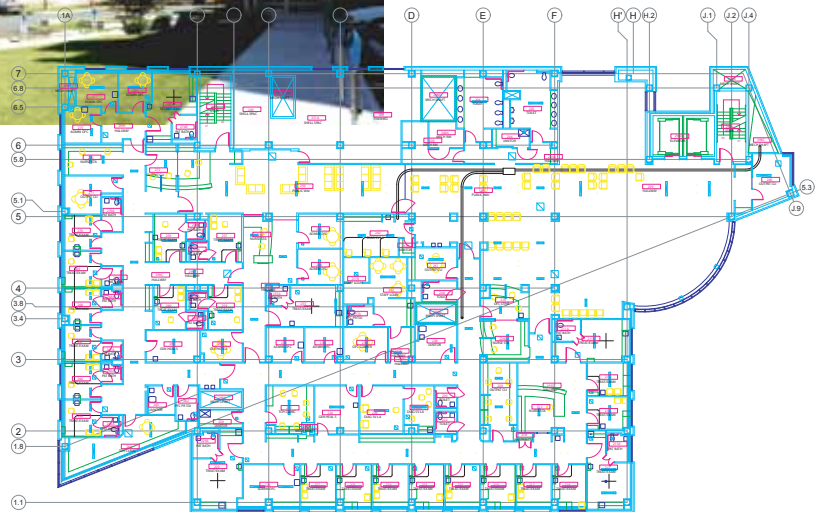
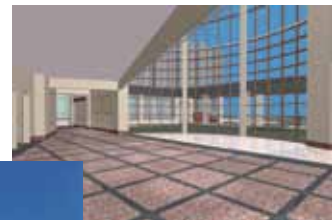
ARCHIBUS

Headquarters - 3rd Floor



Room Code	Room Category	Room Type	Room Standard	Division Code	Department Code
111	74.88	PERS	WKSTATION	WKSTA TECH	SOFTWARE APP
115	127.15	PERS	WKSTATION	WKSTA TECH	SOFTWARE APP
120	74.88	PERS	WKSTATION	WKSTA TECH	OPERATIONS-MAINT
121	74.88	PERS	WKSTATION	WKSTA TECH	OPERATIONS-MAINT
123	74.88	PERS	WKSTATION	WKSTA TECH	FINANCE
126	231.36	PERS	OFFICE	OFF-EXEC	DOMESTIC
127	175.89	SUPPORT	CONFERENCE	CONFERENCE	FINANCE
129	33.67	SERV	TEL CLOSET	TELECOM	DOMESTIC

ARCHIBUS

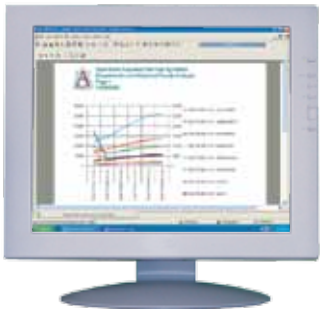


Autodesk®
Authorized Developer
Authorized ISV Partner

Responding to today's facilities demands Planning for tomorrow's needs



ARCHIBUS lets you work in a familiar AutoCAD environment; native Autodesk technologies ensure that drawings and associated data are kept up-to-date



ARCHIBUS puts your detailed graphic information to strategic use, such as this historic trending graph, and 10,000+ reports "out-of-the-box"



ARCHIBUS users can access personalized, intelligent dashboards to drill-down through critical information

From the moment your design is conceived to the long-term management of the building's physical assets, the right combination of technologies and practices makes your job easier. Together, ARCHIBUS and Autodesk offer the tools you need to single-handedly manage your facilities, infrastructure, and related equipment throughout their lifecycles.

Autodesk products let you quickly create, maintain, and distribute drawings such as site maps and floor plans. Meanwhile, ARCHIBUS applications link these representations of physical assets and infrastructure with associated business-level information, such as ownership, utilization, condition, and cost.

Physical changes such as new construction, activities such as employee moves, and business decisions such as new outsourcing projects can be easily planned, managed, and documented from a single source. This ensures that you always have the most up-to-date, accurate information repository on which to base your decisions.

Scalable Solutions to Achieve Results

From individual department to the largest global implementation, ARCHIBUS and Autodesk together:

- Provide scalable solutions that leverage existing skills to reduce workloads
- Give access to real-time data published to the Web for making fast, informed decisions that support your organizational mission
- Enable best practices for continuous improvement in facilities and infrastructure management
- Deliver Commercial-off-the-shelf (COTS) solutions for rapid deployment in 90 days or less and payback within 6 months

Bi-directional Integration, Accurate Information Everywhere

Full bi-directional integration between ARCHIBUS and Autodesk products means you can:

- Perform updates in one system that are automatically reflected in the other for easy, accurate reporting
- Seamlessly connect asset information to drawings
- Create a single distributed repository for managing your facilities and infrastructure information locally and worldwide

Control the Entire Building Lifecycle

The breadth of products offered by Autodesk and ARCHIBUS helps manage the entire building lifecycle—from real estate portfolio planning to the building process to physical asset tracking to on-going maintenance to disposition. This means information is:

- Comprehensively organized and graphically represented
- Easily retrievable yet meets the most stringent reporting and security requirements
- Linked with other sources within your organization, such as employee information and budgeting details from other ERP systems
- Displayed via personalized, intelligent dashboards and secured via role-based or site-based access

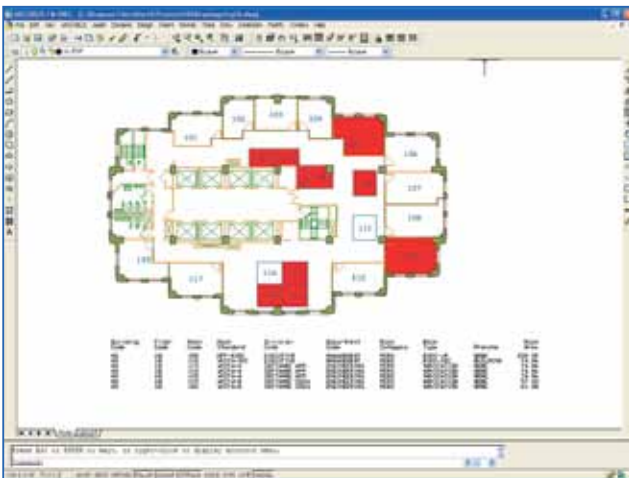
ARCHIBUS—The #1 Solution for Total Infrastructure and Facilities Management

ARCHIBUS adds power and value to popular Autodesk products

AutoCAD®, AutoCAD® Architecture and ARCHIBUS: Real-World, Deliverable Results

When it comes to creating and maintaining floor plans, AutoCAD is the global industry-standard. Add ARCHIBUS and you have a completely integrated solution ensuring that information linked to these drawings is up-to-date and instantly accessible.

ARCHIBUS also supports AutoCAD® Architecture's design automation features, making it easy to accommodate intelligent objects and preserve information associated with objects or rooms as you plan your long-term facilities management strategies.



Quickly identify vacancies throughout a building

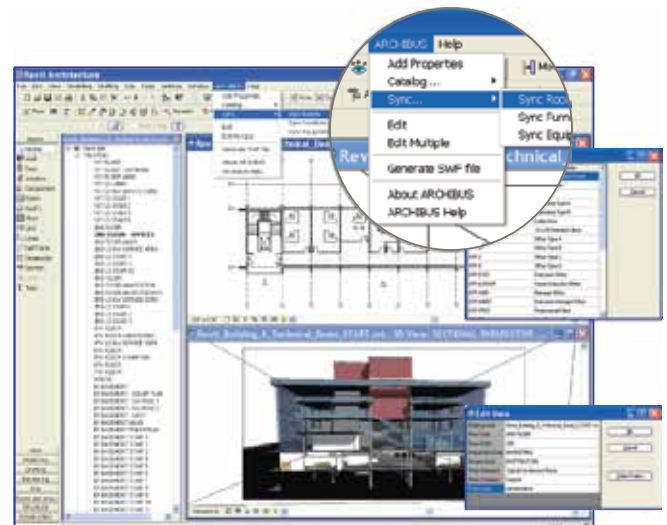
Enhancing Enterprise Workflow

- Deliver reports easily that show native DWG-format drawings and data integrated into attractive, accessible formats, such as Microsoft Word®, Excel®, or Adobe Acrobat®
- Ensure simultaneous updates to data and drawings with Autodesk's underlying technologies
- Develop spreadsheet-like summaries of architectural programs based on headcount, expected department growth, storage needs and more, then allocate this space to floors
- Share rich design information directly with other departments using Autodesk's DWF technology to optimize space planning, increase accuracy of cost accounting, and speed maintenance on equipment
- Increase your organization's productivity and profitability

Revit® Architecture and ARCHIBUS: Complementary Strengths, Better Modeling

With the growing importance of Building Information Modeling (BIM) as the basis for cost-effective creation and modification of buildings throughout their lifecycles, ARCHIBUS now includes an Overlay for Revit to:

- Tie building information to enterprise databases
- Access ARCHIBUS directly from within Revit
- Query Revit data—across different buildings, sites, countries and time zones—from within ARCHIBUS
- Link space, equipment, asset, and portfolio inventories to multiple building models instead of only one
- Combine the results of thousands of models in one ARCHIBUS enterprise infrastructure model connected to rich building information and make changes or additions that are simultaneously reflected in ARCHIBUS



Seamlessly integrate the Revit building model with the ARCHIBUS enterprise infrastructure model

Beyond BIM: True Lifecycle Management

The information you develop during design/construction supports commissioning and lifecycle management. Use ARCHIBUS to make your drawings and building information models live long past the initial construction.

- Connect to enterprise/space/forecasting information to synchronize designs with clients' businesses
- Provide full commissioning information to manage buildings effectively from "Day One"
- Perform inventory management, space forecasting, and strategic master planning
- Manage capital projects and budgets, enterprise moves, room reservations and more
- Employ enterprise-wide SLAs for maintenance management and other services



ARCHIBUS, Inc.
18 Tremont Street
Boston, MA 02108 USA
Tel: 1-617-227-2508
www.archibus.com

**The #1 AutoCAD-based
facilities & infrastructure
solution in the world
with over 4,000,000 Web
and Enterprise users**

A Historic Partnership

ARCHIBUS, Inc. is the #1 global provider of real estate, infrastructure, and facilities management solutions and services, with expenditures for ARCHIBUS-related products and services exceeding \$1.7 Billion (USD). More than 4,000,000 ARCHIBUS Web and Enterprise users worldwide manage over 5 million properties. Available in over 130 countries and more than two dozen languages, ARCHIBUS is supported through a global network of 1,600+ ARCHIBUS Business Partners.

Autodesk is the world's leading design software and digital content company, offering customers progressive business solutions through powerful technology products and services. Its products help customers increase the value of their digital design data and improve efficiencies across their project lifecycle management processes.

The two companies share a working history that stretches back almost to their inception. ARCHIBUS functionality has evolved along with Autodesk products through many generations, and the companies' joint commitment has been consistently acknowledged through the years:

- In 1983, ARCHIBUS was the seventh company to join the Autodesk Developer Network
- Since 1987, ARCHIBUS has been the #1 AutoCAD-based facilities and infrastructure management solution in the world
- In 1991, Autodesk selected ARCHIBUS as its first and only "Strategic Developer" for facilities management applications in the U.S.
- In 1994, ARCHIBUS and Autodesk were founding members of the International Alliance for Interoperability; that year, ARCHIBUS introduced the world's first Web-enabled solution for Autodesk products
- In 1999, the number of ARCHIBUS enterprise and Web-enabled users surpassed the 1,000,000 mark
- In 2005 and 2006, ARCHIBUS was positioned in the leaders quadrant by a prominent IT research and advisory company in a report on integrated workplace management systems
- In 2007 ARCHIBUS becomes an Autodesk Independent Software Vendor (ISV) Partner
- In 2008 Positioned in Leaders quadrant of Gartner "Magic Quadrant for Integrated Workplace Management Systems" report for third consecutive time
- In 2009 ARCHIBUS TEAMS Environmental Software Solution chosen as a Top 100 Product by Buildings magazine

Case Studies *(Review over 100 others at www.archibus.com)*

Procter & Gamble

To help weather turbulent economic times, this global consumer goods giant continually evaluates cost-cutting measures. With 14 million square feet of office and research center space, Procter & Gamble could clearly realize significant savings by increasing the occupancy levels of its buildings on a global basis. Corporate benchmarking metrics that reside in ARCHIBUS—such as rentable area, population, and capacity—were used to create more efficient AutoCAD layouts that incorporated workspace standards, flexible hot desks, and more meeting rooms. So far, the Workplace Services organization at Procter & Gamble has delivered over \$20 million in annual savings to the company from this project alone. Reduced manual workload because of Web-based space and chargeback reports generated from AutoCAD floor plans result in even more savings.



"We introduced corporate benchmarking metrics, including rentable area, population, and capacity figures in ARCHIBUS... The Workplace Services organization has delivered over \$20 million in annual savings to the company..."

—Richard Angel, Project Manager
Workplace Services, Procter & Gamble

Clarian Health

Almost overnight, the size of this Indianapolis-based healthcare organization nearly doubled to over 4 million square feet. Much of this space was leased out or used by multiple departments and had to be prorated for cost purposes. In the past, an associate would manually color areas of a printout to indicate shared spaces and physically draw in lines to represent new construction projects. Now, this information is added to AutoCAD drawings in ARCHIBUS, which automatically reflects all the changes. This saves Clarian time and money on capital projects—architects receive up-to-date electronic drawings instead of performing time-consuming, expensive field surveys. In addition, access to drawings and documents simplifies Medicare reporting and helps satisfy JCAHO requirements, such as reporting the locations of valves and safety equipment throughout the organization.



"We had a lot of space that was leased out, or space that was being used by two departments. ARCHIBUS helps us figure out the proration of space."

—David Doell, Manager of Design and Construction, Clarian Health

Autodesk®

Authorized Developer

Authorized ISV Partner

Autodesk, Inc.
111 McInnis Parkway
San Rafael, CA 94903 USA
www.autodesk.com

©2009, ARCHIBUS, Inc. All rights reserved. ARCHIBUS, the ARCHIBUS logo, and TIFM™ are trademarks of Facilities Management Techniques, Inc. Autodesk and the Autodesk logo, are registered trademarks of Autodesk, Inc., in the USA and/or other countries. All other products or name brands are trademarks of their respective holders.

For more information on what ARCHIBUS and Autodesk can do for you, visit www.archibus.com/autodeskISV